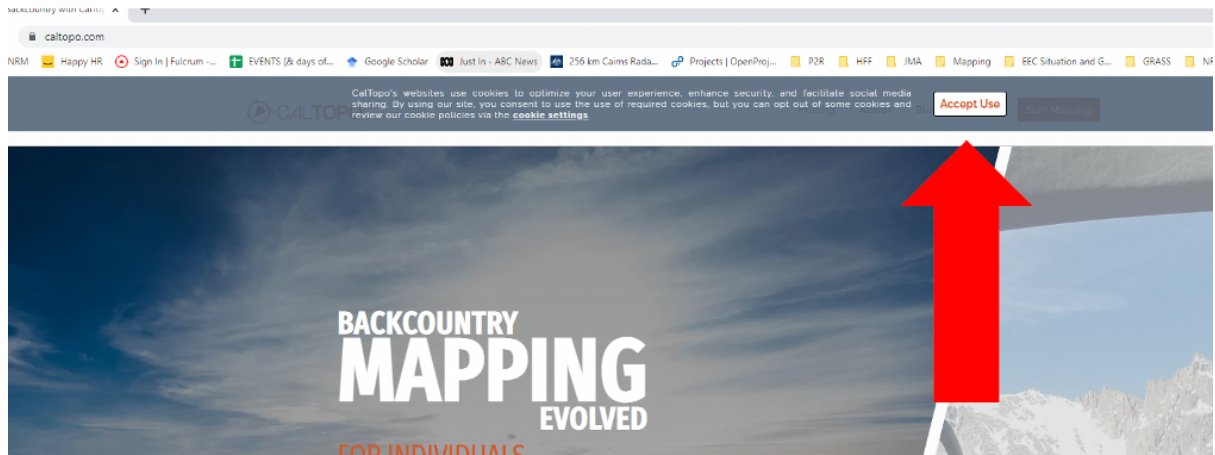


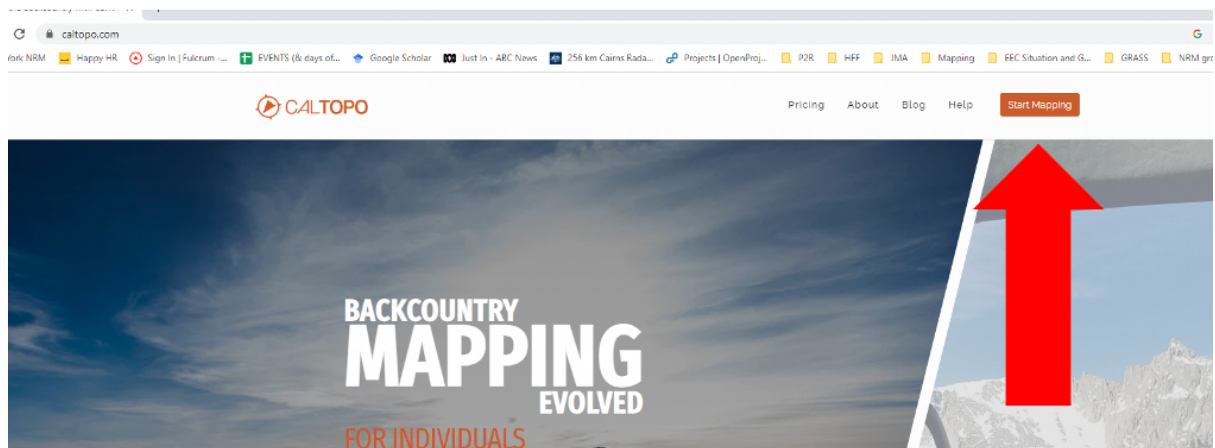
Creating a map using Caltopo

Please show us the location of your activities. Follow the instructions below:

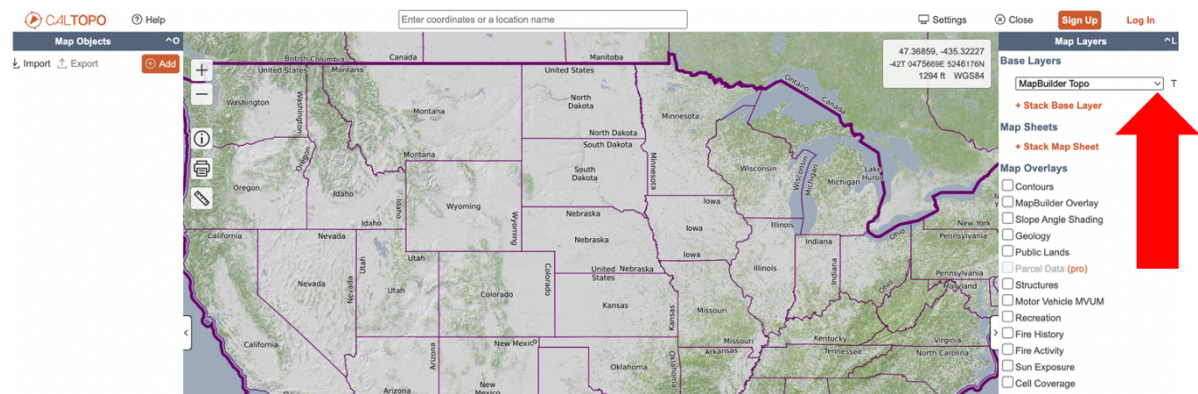
1. On your internet browser, put in <https://caltopo.com>
2. Click the 'Accept all' button on the top right of the screen



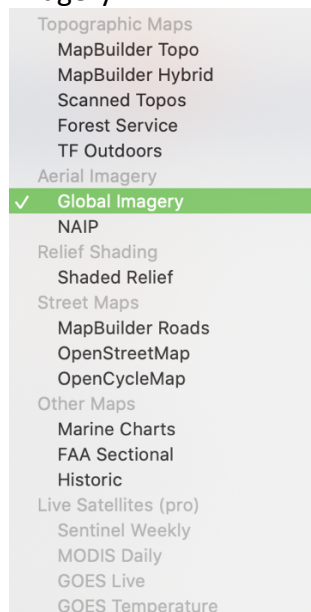
3. Click the orange 'Start Mapping' button on the top right of the screen



4. You should now see a map view. Go to the 'Base Layers' area in the top right part of the screen and click the drop-down arrow next to the words 'MapBuilder Topo'



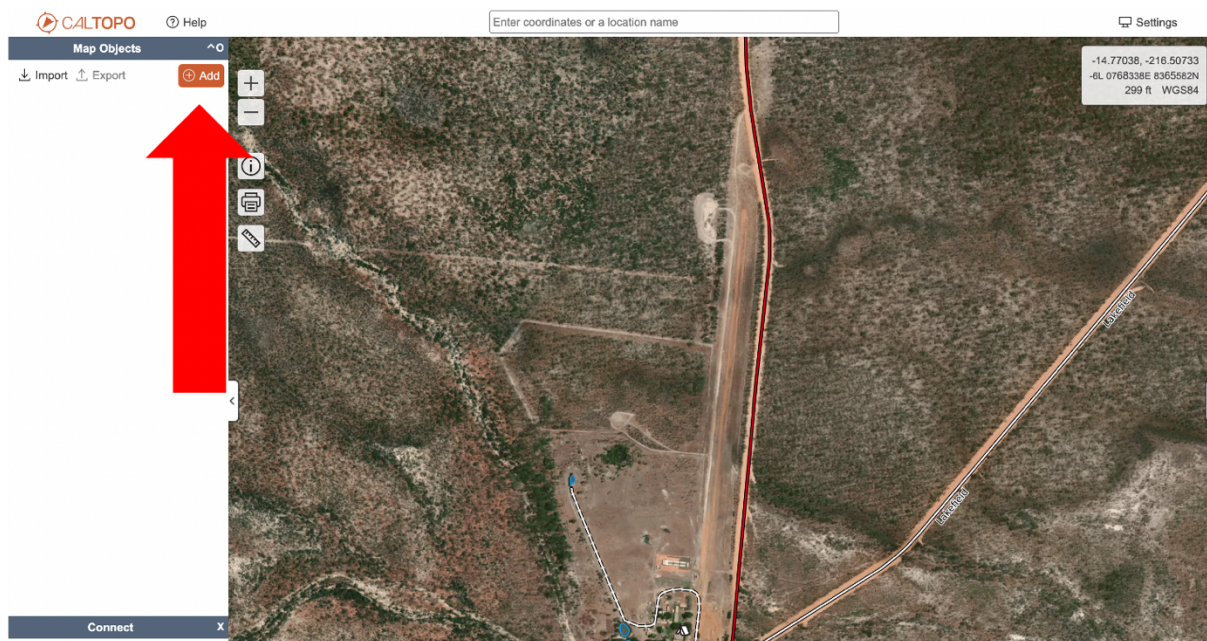
5. In the drop-down list, choose 'Global Imagery'. This will change the map to satellite imagery.



6. Use the + and – buttons at the top left of the screen to zoom in and out. Click and drag the map to navigate to Cape York Peninsula. Zoom in to your property and project area (Note: if you need help navigating, you can select the small box next to 'MapBuilder Overlay' in the 'Map Overlays' section on the right-hand side of the screen. This will add some roads and property boundaries)



7. Once you have navigated to your project area, it is time to draw features that will show us what you plan to do. To do this, click the orange 'Add' button at the top left of the screen.

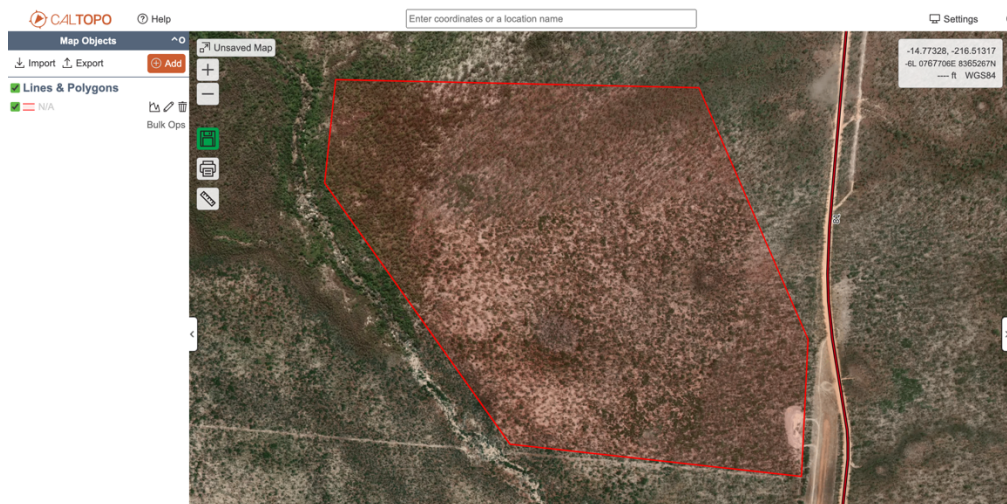
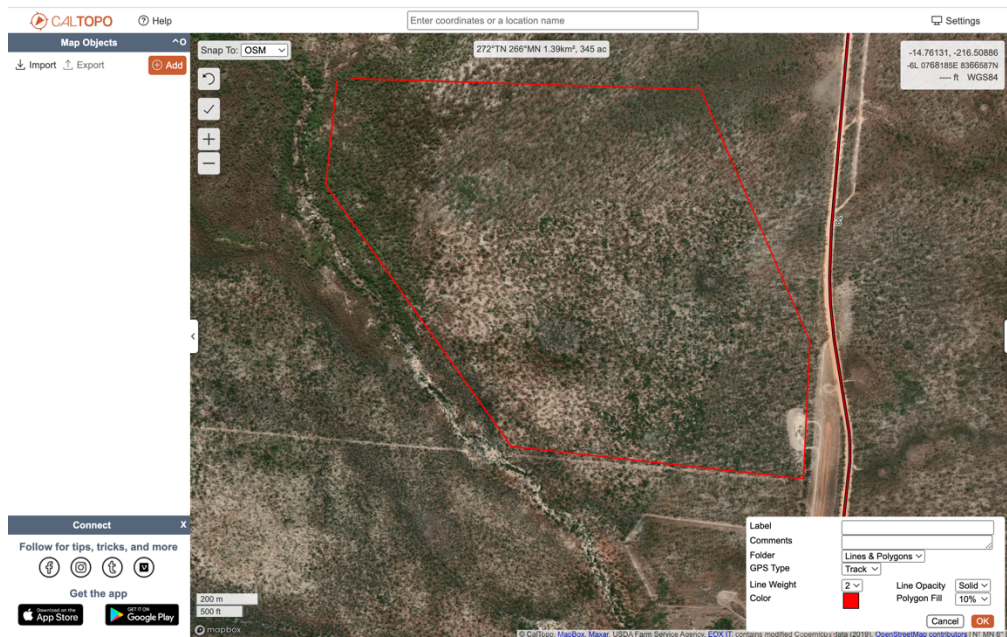


8. Select the feature you want to draw (either a marker, a line, a polygon or a ring).

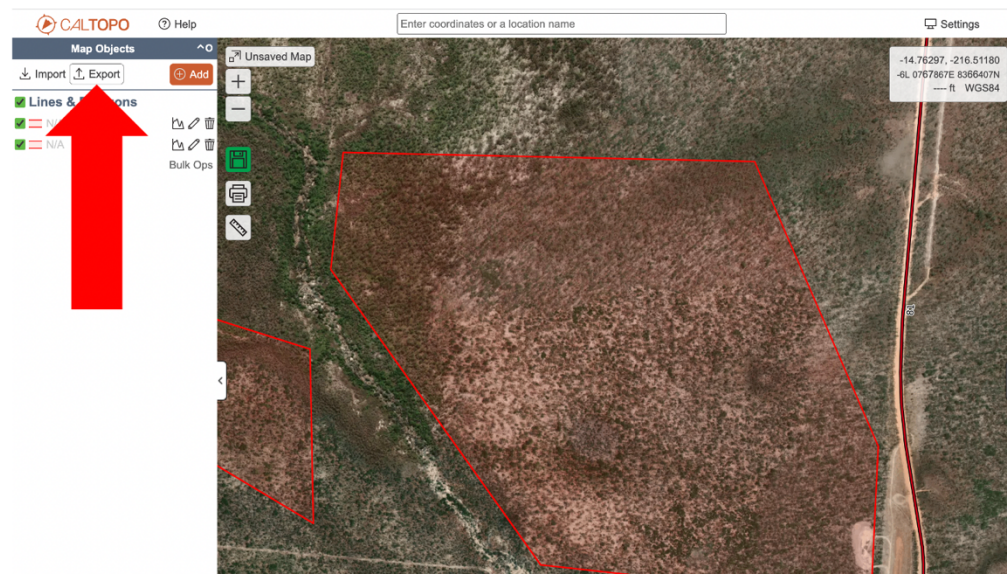
Map Objects

- 📍 **Marker** ⇅M
 Add a waypoint
- **Line** ⇅L
 Draw a route or track
- ⌋ **Buffer** ⇅1-4, ⇅B
 A polygon within a given distance of a line
- ⬠ **Polygon** ⇅P
 Draw a closed polygon
- 📁 **Folder** ⇅F
 Organize and group your map items
- ⦶ **Range Ring**
 circles with a given radii around a chosen point
- ↘ **Bearing Line**
 A line extending from a point at a given angle
- ⌒ **Sector**
 An arc-shaped subsection of a circle

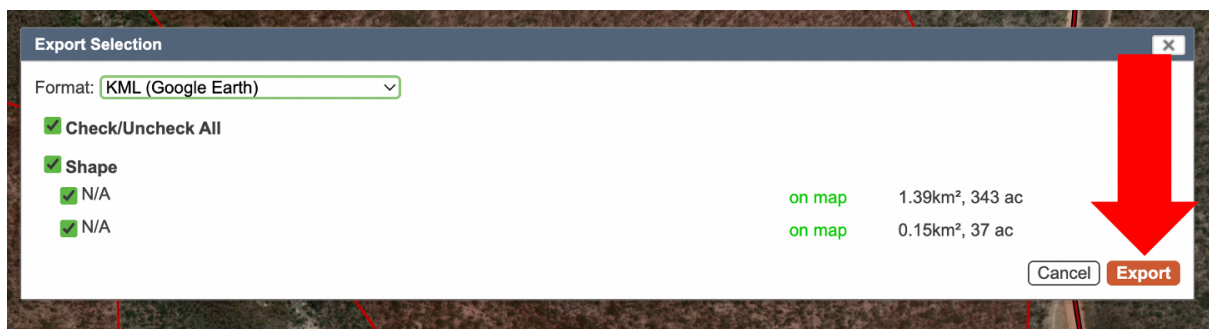
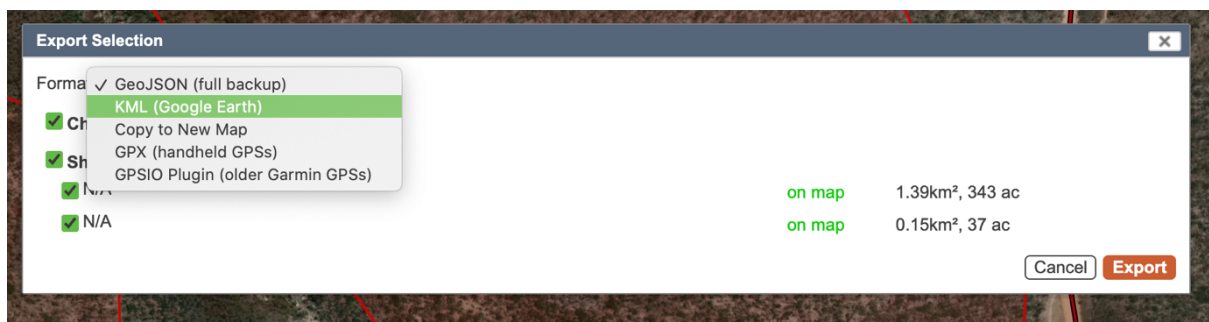
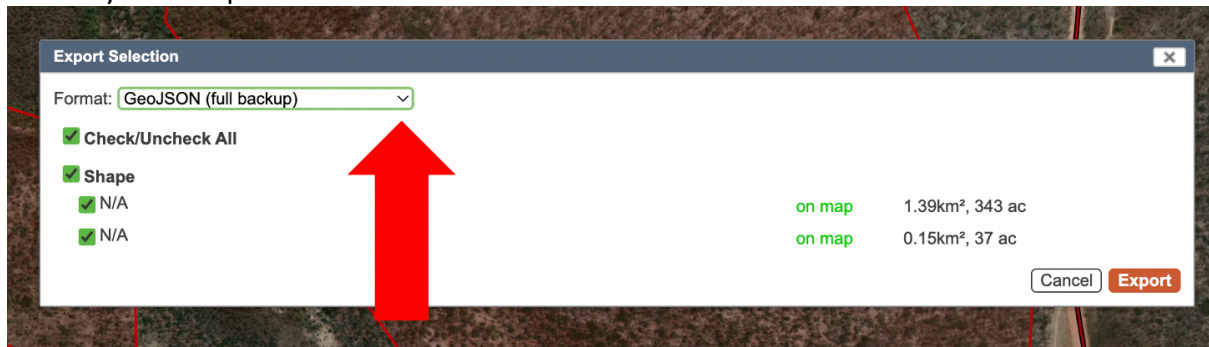
9. Start drawing your feature. For a polygon, move the mouse around and click to add corners. When you want to finish the polygon, double click and the polygon will complete itself.



10. Time to export your features. Click the 'Export' button at the top left of the screen.



11. In the pop up box, click the drop-down arrow next to 'Format'. Select 'KML (Google Earth)'. Then click the orange 'Export' button. The file should start downloading on to your computer.



12. Go back to the application form and click 'attach files'. Find and select your map file to attach it to your application. The file will probably be in the 'Downloads' folder on your computer.