

2012

Hope Vale Community Plan



Hope Vale Aboriginal Shire Council



Table of Contents

INTRODUCTION	3
About the making of the community plan.....	3
What is the purpose of the plan?	3
Philosophy behind the strategiss in this community plan.....	4
ABOUT HOPE VALE.....	6
Hope Vale at a glance.....	6
HOPE VALE ABORIGINAL SHIRE COUNCIL.....	9
Our vision.....	9
Our mission.....	9
Our values.....	9
Our objectives.....	9
Map of locality.....	11
INTRODUCING THE PLANNING THEMES.....	12
Challenges facing Hope Vale.....	12
What community members believe is important	12
Education	13
Social wellbeing	15
Environment	18
Economic development	19
Governance	21
HOW THIS PLAN CAN BE UPDATED AND WHO RECEIVES IT.....	23
Reviewing the community plan.....	23
Changing the community plan	23

INTRODUCTION

About the making of the community plan

What is required?

The specific details of the community plans and the methods of community engagement will be decided by individual local governments; however there are some key stipulations which are required. These are the local government.

1. Must prepare and adopt, by resolution, a community engagement policy (more info below).
2. Must sufficiently outline the engagement process undertaken and show how it complies with its community engagement policy in preparing the community plan (and in the event of any change to the plan).
3. Must have considered and incorporated local and regional issues that affect, or may in the future effect, local government area, including issues relating to the following:
 - i. Economic development
 - ii. Environment Management
 - iii. Governance (e.g. managing infrastructure, disaster Management).
 - iv. Social wellbeing (e.g. art and culture development, housing, population change, community health).
4. Must provide for the five-phase process (described below) when developing their community plan.

What is the purpose of the plan?

The intent of the community plan is that it will represent the **community's views, visions and values for the future** of the local government area, and set a strategic vision for what the community wants the area to be like in 10, 20 or more years.

This plan has been prepared after consideration of the following (as amended) pieces of legislation and plans:

- Local Government Act 2009
- Queensland Sustainable Planning Act 2009
- Local Government (Finance, Plans and Reporting) Regulation 2009
- Local Government Finance Standard 2005
- Queensland Integrated Planning Act 1997

The Corporate plan will then state how the Community plan will be implemented.

Philosophy behind the strategies in this community plan

The community engagement policy-stipulations

1. A local government must prepare and adopt, by resolution, a policy describing how the local government must engage with the community about preparing or amending its community plan.
2. The local government must ensure the community plan is consistent with the community engagement policy.
3. The community engagement policy may also include a description of how the local government may, by resolution, change the community engagement policy.

5 phase process for developing a community plan - stipulations

The process for a local government developing its community plan is as follows:

1. *Intelligence gathering phase*

The Local government-

- a. considers current and emerging trends, issues and relationships that effect the local government and the community; and
- b. identifies key descriptive data about the community by gathering and analysing data obtained from surveys, focus groups and existing forecasts, plans and proposals; and
- c. analyses and evaluates internal conditions, external data and the key descriptive data; and
- d. Identifies areas for which more information is required.

2. *Community input phase*

The local government engages with the community, in accordance with the community engagement policy, in identifying and prioritising the planning themes on which the development of the community plans based.

3. *Community vision phase*

The local government develops its vision for the future of the local government area having regard to its engagement with community.

4. *Community validation phase*

The local government-

- a. Reviews the vision for the local government area; and
- b. Prepares a draft community plan; and
- c. Engages with the community about its visions for the local government area, the planning themes on which the development of the community plan is based and the draft community plan.

5. *Policy and adoption phase*

The local government-

- a. Agrees on strategies and actions to be taken to attain its for the future of the local government area; and
- b. Agrees on groups responsible for implementing specific actions and the timetable to complete the actions; and
- c. Identifies performance indicators for measuring the local government's progress in achieving its vision for the future of the local government area; and
- d. Considers the impact of the draft community plan on its financial forecast, long-term financial plan, and long-term asset management plan; and
- e. Finalises and adopts the community plan.



ABOUT HOPE VALE

Hope Vale at a glance

Hope Vale is situated 46 kilometres north of Cooktown and was established as a Lutheran Mission in 1949 when the Aboriginal people from the Hope Valley and Bedford Missions were relocated here.

In 1986, Hope Vale became the first community to receive a Deed of Grant in Trust (DOGIT) and formed the Hope Vale Aboriginal Council.

The magnificent land surrounding Hope Vale covers freshwater springs, palm tree lined rivers and beautiful bright sand dunes. Hope Vale itself is made of rich red soil. The unique coloured sands near Elim display shades of yellow, black and red.

Geography: 110,000 hectares

Population: 1,034 (Source: ABS 2001 Census and ERP)

Community Services

The community has the following services available to community members:

- Age Care Hostel
- Disability Services
- Home and Community Care
- Primary Health Clinic
- Wellbeing Centre
- Men's & Women's Group
- Women's Shelter
- Life Promotions
- Lutheran Church
- Family Responsibility Commission
- BRACS
- Royal Flying Doctors Service
- Kindergarten
- Hope Vale Primary School
- Childcare – Nola's Place
- Sport and Recreation Centre (PCYC)
- Queensland Police
- Department of Housing
- Justice Group
- Land and Sea Rangers
- Knowledge Centre
- Library

- Aquatic Centre
- Post Office
- Arts & Culture Centre
- Local Food Store
- Service Station

Community Health/Education

Hope Vale has a health clinic which provides basic primary health care services, support services are provided through visiting doctors and specialists.

The Wellbeing Centre was established in 2009; this facility provides counselling services and supports visiting specialists from Royal Flying Doctor Service.

Hope Vale has a primary school campus that incorporates Prep to Grade 7.

Kindergarten and childcare facilities are available at Hope Vale.

Transport

Campbell's Freight operates between Hope Vale and Cairns on a weekly basis. Mail services are provided daily from Cooktown.

Sport and Recreation, Arts/Culture

Hope Vale has a diverse range of active sporting, recreational and arts/cultural groups and clubs. A number of community events are held throughout the year including the Hope Vale rodeo, pig hunt, local music events and pelican one.

Assets under Council Management: \$63,000,000.00

Length of Roads: 218km

The access road to Hope Vale consists of bitumen sealed and gravel road. The internal streets of the community are sealed. Roads within the Shire are gravel and four wheel n is required on most of the roads during the wet season.

Number of Staff: 100

Future Investment in Shire:

\$8.5m Water and Sewerage Upgrade

\$3.4m Business Precinct

\$7.5m Housing and infrastructure Hope Valley Estates

\$6.0m New Housing Construction and Major Upgrades

\$5.9m Road works

CDEP Meeting / Training facility



HOPE VALE ABORIGINAL SHIRE COUNCIL

Our vision

A community for families combining health, education and housing to deliver improved living standards to all.

Our mission

Through the practice of good governance and strong leadership, the Hope Vale Aboriginal Shire Council aims to:

- Provide quality services
- Be accountable
- Advocate on community issues
- Be fair and equitable
- Provide quality representation on issues affecting the community
- Accommodate change
- Foster growth
- Promote success in a friendly and culturally sensitive environment
- Comply with all legislative and statutory requirements

Our values

Respect for Aboriginal Culture (Cultural integrity)
 Fairness and equity
 Loyalty and recognition
 Community
 Responsible Environmental management
 Effective communication and consultation

Honesty
 Leadership
 Accountability
 Openness and transparency
 Sustainable growth

Our objectives

Shire Growth, Management, Economic Development and Promotion

Work collaboratively with State and Commonwealth Government, the community and other stakeholders. Encourage and promote sustainable and manageable growth in the Shire.

Financial and Resource Management

Improve governance and financial accountability, preparation of budgets on time; and to improve quantity and quality of resources available for Council.

Community Development, Recreation and Culture

Work with State and Australian Governments to improve recreational services and facilities. Ensuring programs and social services are delivered in a safe and healthy environment which encourages investment, community commitment, ownership, and participation.

Municipal Services

Work with State and Australian Governments to improve recreational services and facilities. Ensuring programs and social services are delivered in a safe and healthy environment which encourages investment, community commitment, ownership, and participation.

Business Enterprise

Work with State and Australian Government, community and other stake holders, to assist in the development of housing and infrastructure for the betterment of the community.

Transitional Impacts

Consideration of Government reform initiatives, including Welfare Reform, Housing, Home Ownership, and Land Tenure.

Function Areas

The Hope Vale Aboriginal Shire Council provides Local Government and other services to the community through its areas of administration, finance, indigenous knowledge centre, municipal works and associated services, housing, and providing community services such as aged care, child care, health, HACC, postal, and disability services among others.

Corporate Governance

Council is committed to the principles of good governance and fully complying with the separation of roles of councillors and staff as required by the Local Government Act 2009.

Council's Staff

Council recognises that its staff is its greatest asset and is committed to investing and supporting its people to deliver the highest quality of services in a culturally appropriate way.

Hope Vale Aboriginal Shire Council wishes to be recognised as an 'Employer of Choice' and attract and grow staff through providing interesting and challenging jobs in a supportive, healthy and safe work environment.

Map of locality

The two maps shown below illustrate the location of Hope Vale and the Hope Vale Deed of Grant In Trust (DOGIT) boundary.

Figure 1: Map of Queensland

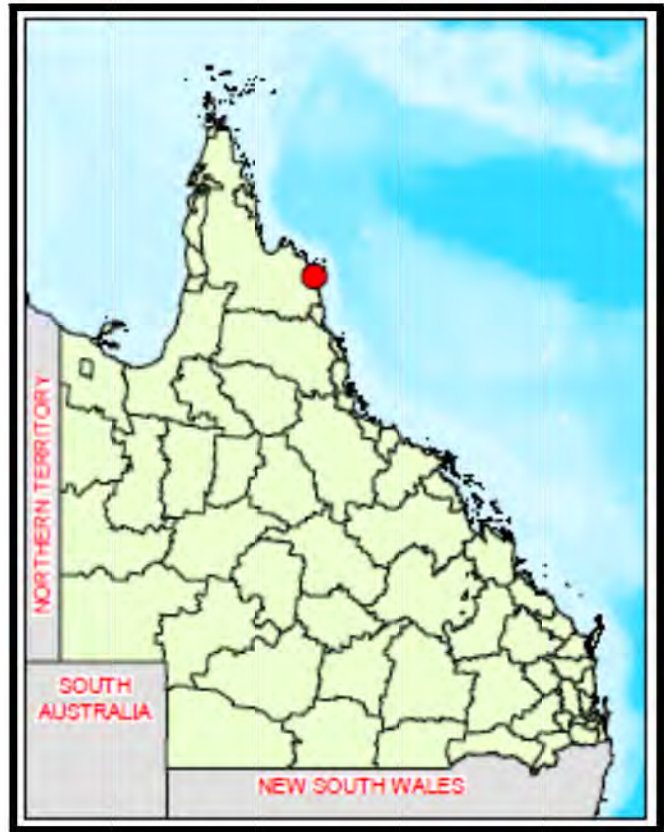


Figure 2: Hope Vale DOGIT Boundary



INTRODUCING THE PLANNING THEMES

Challenges facing Hope Vale

There are a number of challenges facing Hope Vale now and over the coming years. These include;

- Resolution of land tenure issues
- Securing and maintaining basic infrastructure for our community
- Maintaining a viable community – the lack of opportunities, especially with employment
- Health and Education standards and outcomes. For long term development of Hope Vale these two areas require significant improvement.
- Building back our culture
- Hope Vale being well-represented politically
- Improve our economic well-being we need to create meaningful employment that will result in real wealth creation, increased self-esteem and greater responsibility for our people

What community members believe is important

What do you think are the most important developments for Hope Vale in the next 10 years?

“Parks and Playgrounds for children”.

“Better toilet facilities in community”

“Sporting Complex”.

“Housing”.

“More Employment”.

“A better health facility”.

“Market Garden”.

“Security for kids on streets”.

“Water play for toddlers”.

“More Youth activities”.

Please tell us about your aspirations for the Hope Vale community?

“Young People on Council”.

“Better education”.

“More Job opportunities for Bama”.

“Pedestrian Crossing at Aged Care”.

“Speed Bumps on streets”.

“Home Ownership-being able to afford it”.

“Safe and healthy Community”.

Taking the challenges that face Hope Vale, we can identify a number of strategies to use in planning for our future. These are listed below.

Education

Education Strategy 1

What	Lobby for Hope Vale children to be engaged in and benefiting from schooling – Primary right through to Secondary.
Why	Education levels are extremely poor.
Who	Hope Vale Aboriginal Shire Council and all sections of the community.
When	Ongoing

Education Strategy 2

What	Hope Vale children acquire basic skills for life and learning with access to affordable, quality early childhood education
Why	Approximately 40% of 0 to 5 year olds are only attending early childhood education.
Who	Hope Vale Aboriginal Shire Council and all sections of the community.
When	Ongoing

Education Strategy 3

What	Hope Vale people are supported and encouraged to become educational professionals.
Why	We want community members to be more highly skilled.
Who	Hope Vale Aboriginal Shire Council
When	Ongoing

Education Strategy 4

What	Hope Vale Youth make a successful transition from school to work and further study.
Why	Youth are finding it hard to transition from school to work and are becoming reliant on their families.
Who	Hope Vale Aboriginal Shire Council, State and Federal Governments and community.
When	2012 and ongoing.



Social wellbeing

Social Wellbeing Strategy 1: Health

What	Hope Vale children are born healthy and have the same health outcomes as other Australian children – Closing the Gap initiative.
Why	The State or Federal Governments are responsible for the health-related services to community people and have action plans for delivering this.
Who	Qld Health and FaHCSIA with the co-operation of Hope Vale Aboriginal Shire Council.
When	Ongoing

Social Wellbeing Strategy 2: Health

What	Improve the physical and emotional health of the community.
Why	Being better informed, people will try to access health services, or change any unhealthy habits in their lives.
Who	Hope Vale Aboriginal Shire Council with assistance of Queensland Health and community members.
When	Ongoing

Social Wellbeing Strategy 3: Health

What	Establish a community-wide integrated model of Health and Wellbeing that ensures that there is “no wrong door” for individuals with health needs, whether they stem from primary health care, alcohol and drug issues, mental health or long term disengagement.
Why	Current services are operating in silo’s leaving community people confused.
Who	Queensland Health and Department of Health and Aging.
When	2012 and ongoing

Social Wellbeing Strategy 4: Health

What	Hope Vale people are supported and encouraged to become healthy and wellbeing professionals.
Why	Because the majority of health problems faced in Hope Vale are preventable.
Who	Hope Vale Health Clinic with assistance and support of Queensland Health, Department of Health and Aging and the Hope Vale Aboriginal Shire Council.
When	2012

Social Wellbeing Strategy 5: Housing

What	Home ownership becomes an achievable goal for Hope Vale residents
Why	For community members to have the same opportunity as all other Australians on owning their own home.
Who	Hope Vale Aboriginal Shire Council and community members
When	2011 – ongoing

Social Wellbeing Strategy 6: Housing

What	Hope Vale community members live in good homes, which are looked after and meet the needs of the growing town including the opportunity to buy or build their own home”.
Why	Due to overcrowding and also the initiative of Closing the Gap in Indigenous housing.
Who	Hope Vale Aboriginal Shire Council and State and Federal Governments and community members.
When	2011

Social Wellbeing Strategy 7: Housing

What	Hope vale services have suitable staff accommodation available.
Why	Very limited housing is available to staff working within the community.
Who	Hope Vale Aboriginal Shire Council and State and Federal Governments.
When	2011



s

Environment

Environment Strategy 1

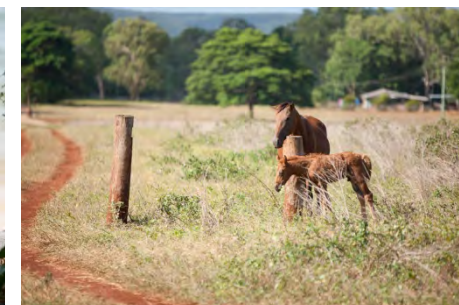
What	Provide a safer environment for Hope Vale people
Why	Street lighting requires upgrading and expanding throughout the township.
Who	Hope Vale Aboriginal Shire Council and State and Federal Governments.
When	2011

Environment Strategy 2

What	Ranger Program
Why	Identify pests including weeds and feral animals to assist in reducing damage to the environment
Who	Hope Vale Ranger Program
When	2011

Environment Strategy 3

What	Erosion and flood mitigation strategy
Why	To reduce erosion by improving drainage to better manage flood water during the wet season.
Who	Hope Vale Aboriginal Shire Council
When	Ongoing



Economic development

Economic Development Strategy 1

What	Hope Vale residents are engaged in the real economy: there are opportunities for individuals to take up real employment, business support mechanisms are available and mobility for employment support.
Why	Currently the Hope Vale Aboriginal Shire Council is the biggest employer in the community. State and Federal Governments and organisations visiting the community on a fly in fly out basis need to re-visit their service delivery model to employ more local community members.
Who	Hope Vale Aboriginal Shire Council, State and Federal Governments as well as non-government organisations.
When	2011 – ongoing

Economic Development Strategy 2

What	Continue and expand with the current workforce for infrastructure projects within Hope Vale that are made up of local community members.
Why	To provide increase Indigenous employment in the Hope Vale community.
Who	Hope Vale Aboriginal Shire Council
When	Ongoing

Economic Development Strategy 3

What	Create a diverse economy that is not reliant upon one source of employment.
Why	Employment fluctuates and certain industries such as tourism have peak periods and slow periods that require large numbers of casual staff but not full time positions.
Who	Private enterprise, Hope Vale Aboriginal Shire Council, State and Commonwealth Governments
When	Ongoing



Governance

Governance Strategy 1

What	Develop the capacity of local people to be future leaders in Hope Vale.
Why	For good governance to continue within the future.
Who	Hope Vale Aboriginal Shire Council and community members.
When	2011 – ongoing

Governance Strategy 2

What	Drive local solutions and improved services for the benefit of families, children and elders through the annual review of the community plan.
Why	The Community Plan will remain relevant and reflective of people's desires.
Who	Hope Vale Aboriginal Shire Council and community.
When	Annually

Governance Strategy 3

What	To sustain local tradition, language and culture, and knowledge of the environment.
Why	As local tradition, language, culture and knowledge is being lost to the younger generations. This requires to be captured before it is lost for good.
Who	Hope Vale Aboriginal Shire Council working with the Indigenous Knowledge Centre and the Arts & Culture Centre.
When	2012 and ongoing



HOW THIS PLAN CAN BE UPDATED AND WHO RECEIVES IT

Reviewing the community plan

This plan will be in force until 2012, or earlier if we decide to adopt a new one. Every year, Hope Vale Aboriginal Shire Council will review the Community Plan. At least once every five years, the community will be part of the review process in line with Council's *Community Engagement Policy*.

Changing the community plan

Council can make minor amendments and corrections to the Community Plan at any time. To make a major change to the plan, the community will be engaged as part of a review process and Council must pass a resolution adopting the change.